

SCHOLARSHIPS & FINANCIAL AID RESOURCES

While there are no widely available scholarships specifically designated for individuals with MPS, many disability-inclusive scholarships, grants, and support programs may help reduce financial barriers to education and training.

1. Higher Education (HE)

Disabled Students' Allowances (DSAs)

Covers study-related costs due to disability, long-term illness, or mental health condition.

Can help pay for:

- specialist equipment (e.g. computer software)
- non-medical helpers (e.g. note-takers, mentors)
- extra travel costs
- other study support

Not means-tested

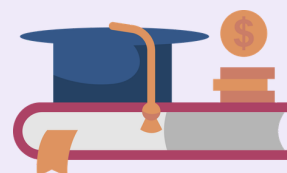
Apply through Student Finance (England, Wales, Scotland, or NI)



University Disability Support Funds

Many universities have hardship or disability funds to cover additional costs not met by DSAs.

- Apply through your university's student services or disability support office.



NHS Learning Support Fund

Additional support for eligible (healthcare students) with childcare, travel, or hardship needs.

- Includes extra help for students with disabilities studying:
- nursing
- midwifery
- allied health programs



2. Scholarships & Charities

Snowdon Trust

Grants for physically disabled and sensory impaired students.

Turn2us

Database of charitable grants, including support for disabled students.

The Leverhulme Trade Charities Trust

Grants for dependants of certain trades who are also disabled.

Many universities also offer emergency hardship funding or small accessibility grants that are not widely advertised. Ask your disability support office directly.



3. Asia-Pacific Scholarships & Financial Aid

Disability-Specific Opportunities

AUNDPPnet (ASEAN University Network – Disability & Public Policy)

Offers: Master's-level scholarships focused on disability inclusion, accessibility, and public policy.

Eligibility: Bachelor's degree and typically an admission offer; open to students with physical disabilities.

Timeline: Applications generally open twice yearly, with deadlines around June and November/December.

Location: Universiti Malaya, supported by The Nippon Foundation.

MDIS Education Trust Fund (Singapore)

Offers: Bursaries for students from Special Education Schools, including those with autism, hearing impairments, and multiple disabilities.

Funding: Awards of up to S\$5,000 have been offered in previous years. DisabilityAsia / AIDD Scholarships (Bangladesh)

Offers: Full scholarships for a Master of Public Health (MPH) program at the University of South Asia, Dhaka.

How to Apply: Contact disabilityasia@gmail.com for current application information.

Government & University Support Programs

BKOKU (Malaysia)

Offers: Financial assistance for students with disabilities at certificate, diploma, undergraduate, and postgraduate levels.

Funding: May include tuition support, monthly allowances, and institutional fees.

Universiti Malaya Fee Reduction

Offers: A 50% reduction in tuition and research fees for eligible postgraduate students with disabilities.

Shell Malaysia Scholarships

Offers: Scholarships for high-achieving students, including those with disabilities, pursuing foundation or A-Level studies.

Additional Benefits: Mentorship and internship opportunities.

Indonesia Endowment Fund (LPDP)

Offers: Government-funded postgraduate scholarships covering tuition and living expenses for Indonesian students.

Regional & International Opportunities

Dana Asia Scholarships

Countries: Thailand, Cambodia, and the Philippines.

Offers: Support for university, vocational, or language training, including tuition, accommodation, meals, and learning materials.

Erasmus Mundus

Offers: International Master's and Doctorate scholarships covering tuition, living expenses, travel, and insurance.

Asia-Wide Government Scholarships

Programs such as **MEXT (Japan)**, **GKS (South Korea)**, and **Taiwan Government Scholarships** often provide full tuition, living stipends, travel support, and health insurance.

Additional Opportunities in Malaysia

- **Malaysian International Scholarship (MIS)** – Postgraduate funding covering tuition and living expenses.
- **MJIT Scholarships** – Fully funded engineering and technology scholarships with research support.
- **Yayasan Khazanah Scholarship** – Prestigious full-degree scholarships covering major educational expenses.
- **Jeffrey Cheah Foundation Scholarships** – Support for high-achieving students studying at Sunway University.

4. Employment /Work

Access to Work (DWP)

Government scheme to help with work-related support.

Can cover:

- specialist equipment
- support workers
- interpreters
- taxi fares if public transport is not possible
- mental health support



Disability Confident Employers

Encourages inclusive hiring and may offer:

- flexible working
- job carving
- additional training support



Jobcentre Plus: Specialist Disability Employment Advisers

Can help with:

- finding suitable roles
- workplace adjustments
- funding support



Work and Health Programme

Employment support for disabled individuals, including:

- training opportunities
- work placements
- employability support



Charitable Funds for Work Support

Scope

Information and guidance on grants for work and training.

Shaw Trust

Employment support services and training opportunities.

Leonard Cheshire

Training and workplace support programmes.



5. General Financial Support

Personal Independence Payment (PIP)

Non-means-tested support for extra living costs related to long-term health conditions or disabilities.

Universal Credit / Employment and Support Allowance (ESA)

Financial support for individuals unable to work or with limited capacity for work.

Council Support Funds

Some local authorities may offer grants or discretionary financial support.

Top 5 Tips for Applying

- 1 Apply early whenever possible
- 2 Keep copies of all documents and applications
- 3 Ask universities about hidden hardship or disability funds
- 4 Don't assume you are ineligible for support
- 5 Reach out to NGOs or advocacy groups for guidance



6. How to Apply for Support

1

Research Available Funding

Explore government, university, charitable, and disability-specific support options.

2

Check Eligibility

Review disability, income, education, or location requirements carefully.

3

Gather Documents

You may need: medical documentation, proof of enrolment, financial information, recommendation letters.

4

Submit Applications Early

Many funding programs have deadlines and limited availability.

5

Follow Up if Needed

Track applications and respond to requests for additional information.